

## Installation of the semi rigid flashing

Bottom connection in the middle of the roof

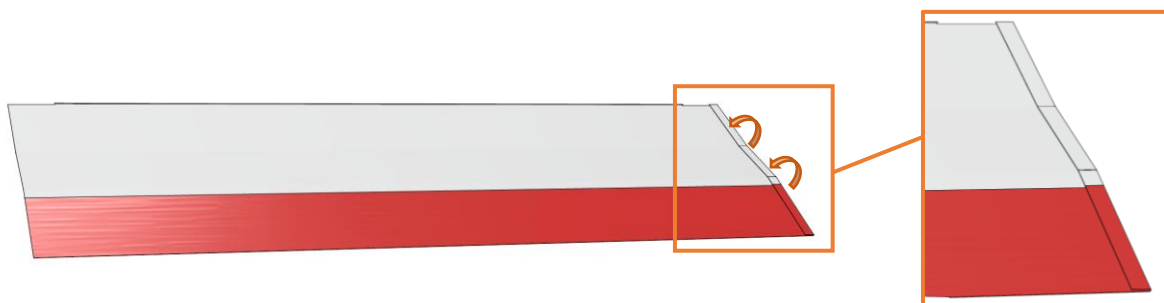
Roof pitch from 20° to 50°

Designed for flat and low curved interlocking tiles

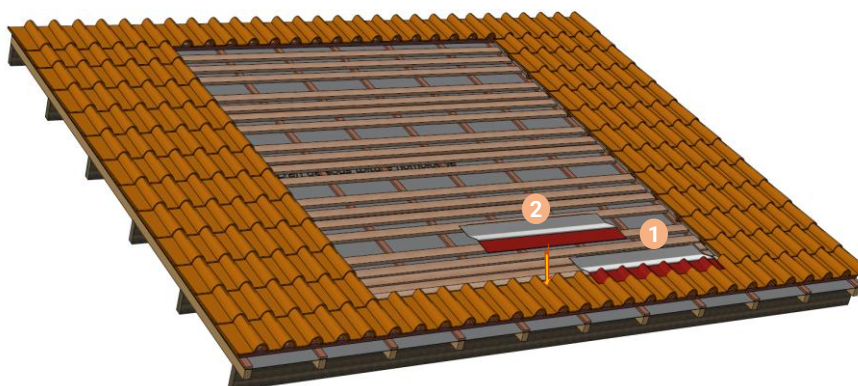
Material supplied: Semi-Rigid Flashing, 1,8m long, ART106044

Material needed: High Tack Sealant from LEADAX, Roller, Scissors

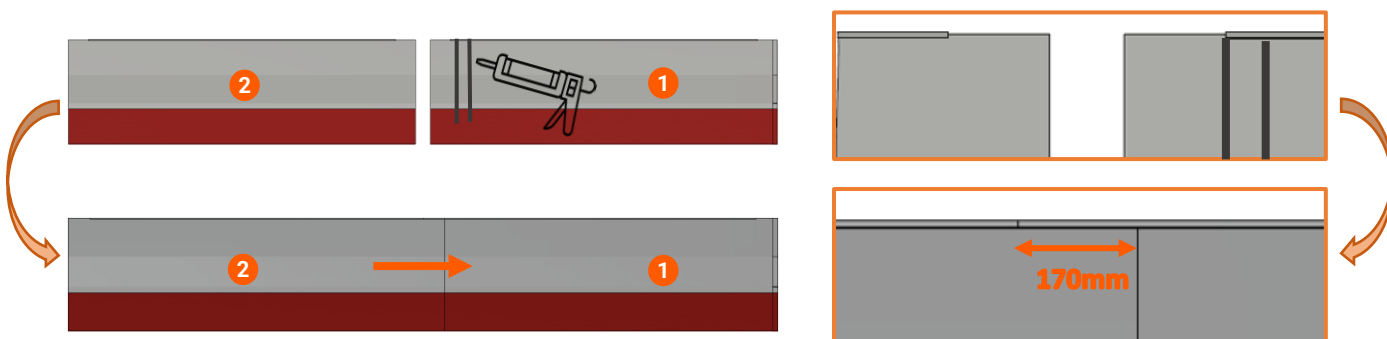
- 1 Make the right angle of the semi-rigid flashing. Bend the right-hand edge of the flashing (2cm) with folding pliers to create a clamp and a lateral water barrier. Flatten the clamp so that it does not touch the flat part of the flashing, but at 2mm-3mm from it.



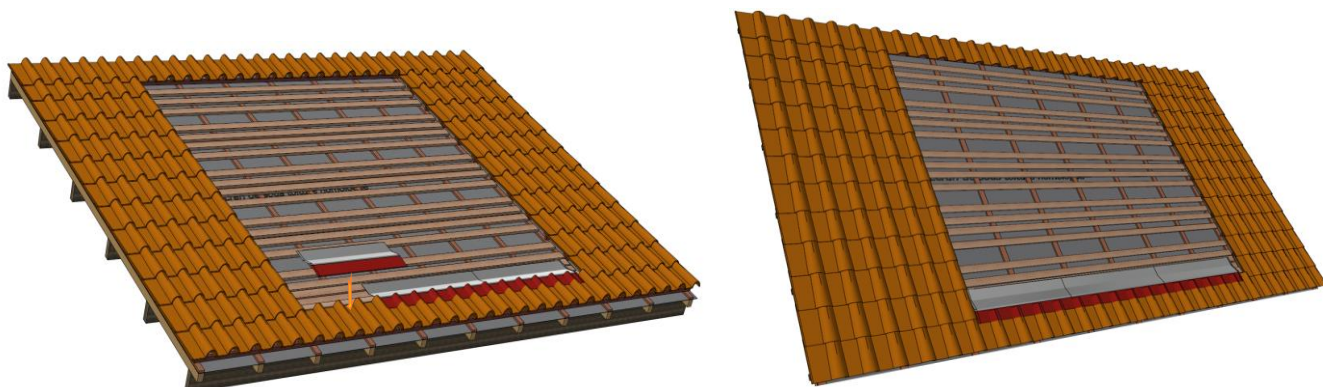
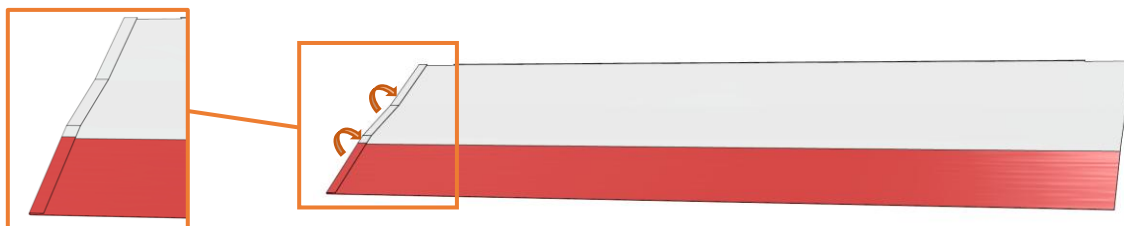
- 2 Position the right angle created earlier at the lower right end of the PV field. Position the semi-rigid flashing from right to left, fixing them in the thickness of the support battens with their fixing legs.



- 3** Add two sealant strips on the overlapping of each semi rigid flashing. Place the flashings side by side until the top clips touch, then stick the flexible parts together. The overlap between 2 flashings is 170 mm.



- 4** Create the left-hand corner. To do this, cut the flashing at the left end of the field to the required length. Make a 2cm fold at the left side to create a lateral water barrier.



- 5** From the middle of the waterproofing strip, cut the white protective film behind in the middle of the flashing. Peel it off straight.



- 6** Round off each edge of the waterproofing strip



- 7** Stick the waterproofing strip on the tiles. Make sure tiles are free of dust & dry.



**8** Dress the waterproofing strip with a roller



**9** Add sealant on the edge of the waterproofing strip

