



---

Photovoltaic Solutions for Every Roof

**Fast. Universal. Reliable.**  
**Engineered for the next generation.**

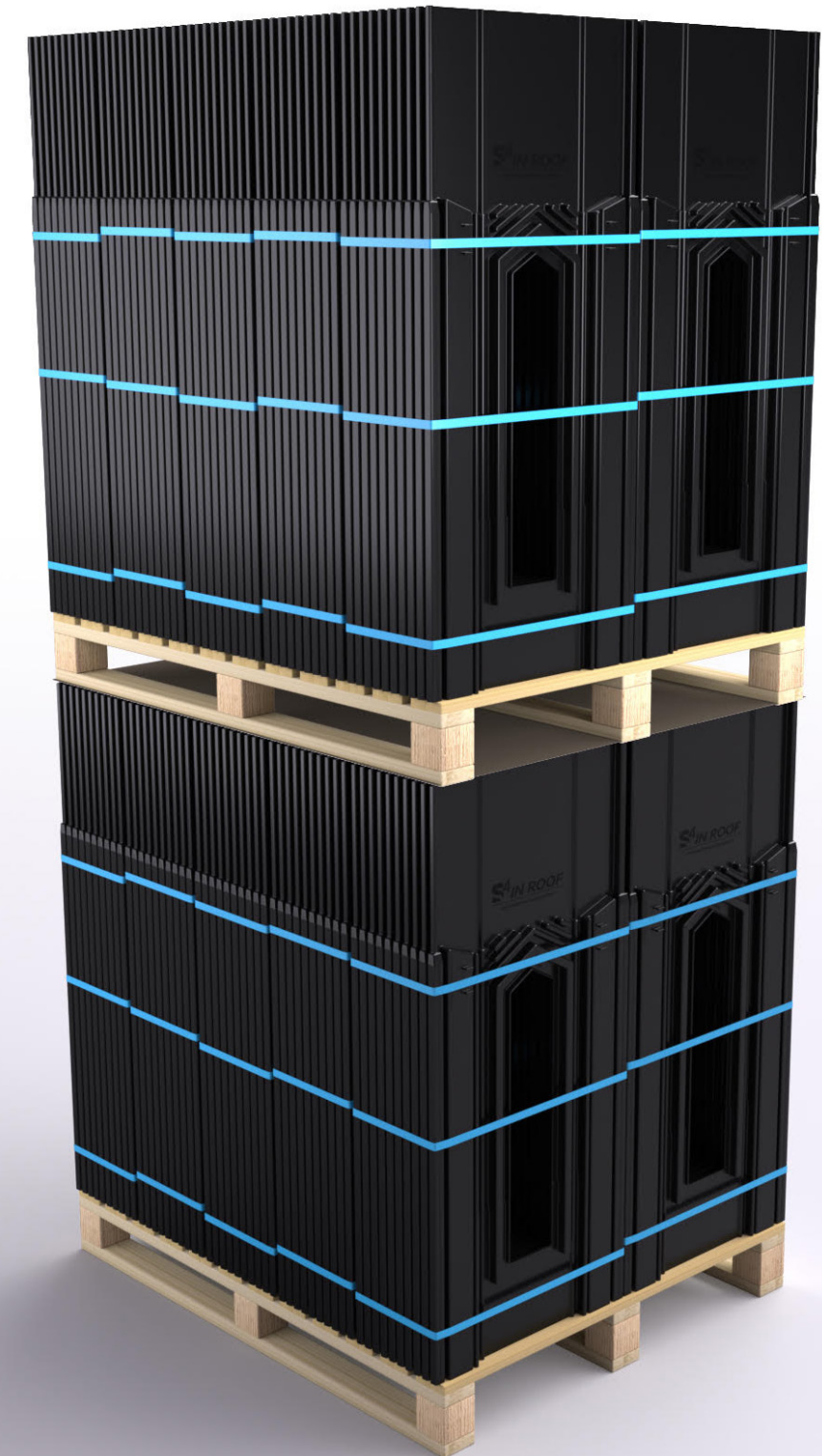
# ONE PLATE. INFINITE POSSIBILITIES.

Patented Universal Base Plate

Fits all panel sizes, portrait and landscape.  
One component, all configurations.

- Reduced inventory complexity
- Optimized logistics
- Faster installations
- Fewer errors, better performance

Durability exceeding 25 years  
10 Year Warranty



## Design Freedom & Durability

### Lateral Extension Rails

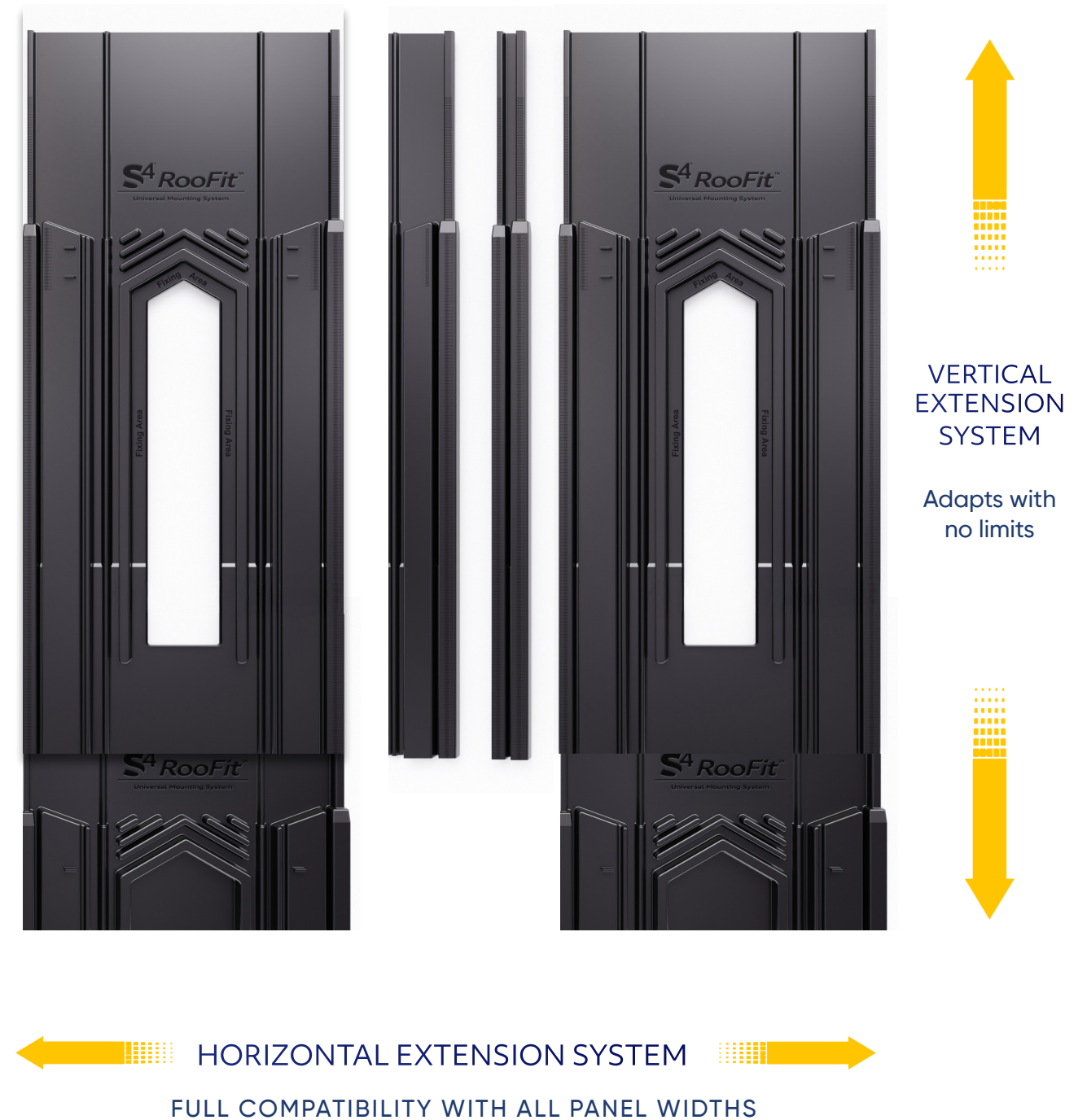
Adapt to any width without redesign.  
Complete layout freedom.

### Built to Last

Adapt to any width without redesign.  
Complete layout freedom.

### Certified Solution

Smart, patented system for solar without compromise.



# Only 5 Accessories Needed

S4 simplifies photovoltaic installation with just 5 industrial-grade components. Every project becomes a model of speed, cleanliness, and efficiency.

## Fewer Parts

Streamlined logistics,  
Reduced stock,  
Optimized turnover.

## Less Time

Fewer errors  
Less time spent on the roof.

## Consistent Performance

Well-managed projects  
Satisfied customers.



STAINLESS STEEL SCREW FOR CLAMPS  
6.5 X 60MM + EPDM WASHER



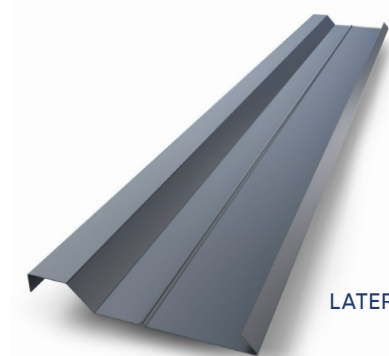
SINGLE CLAMP



FLASHING HOOKS



HEXAGONAL HEAD SCREW  
6.5 x 25 MM FOR FIXING THE PLATE.



LATERAL FLASHING

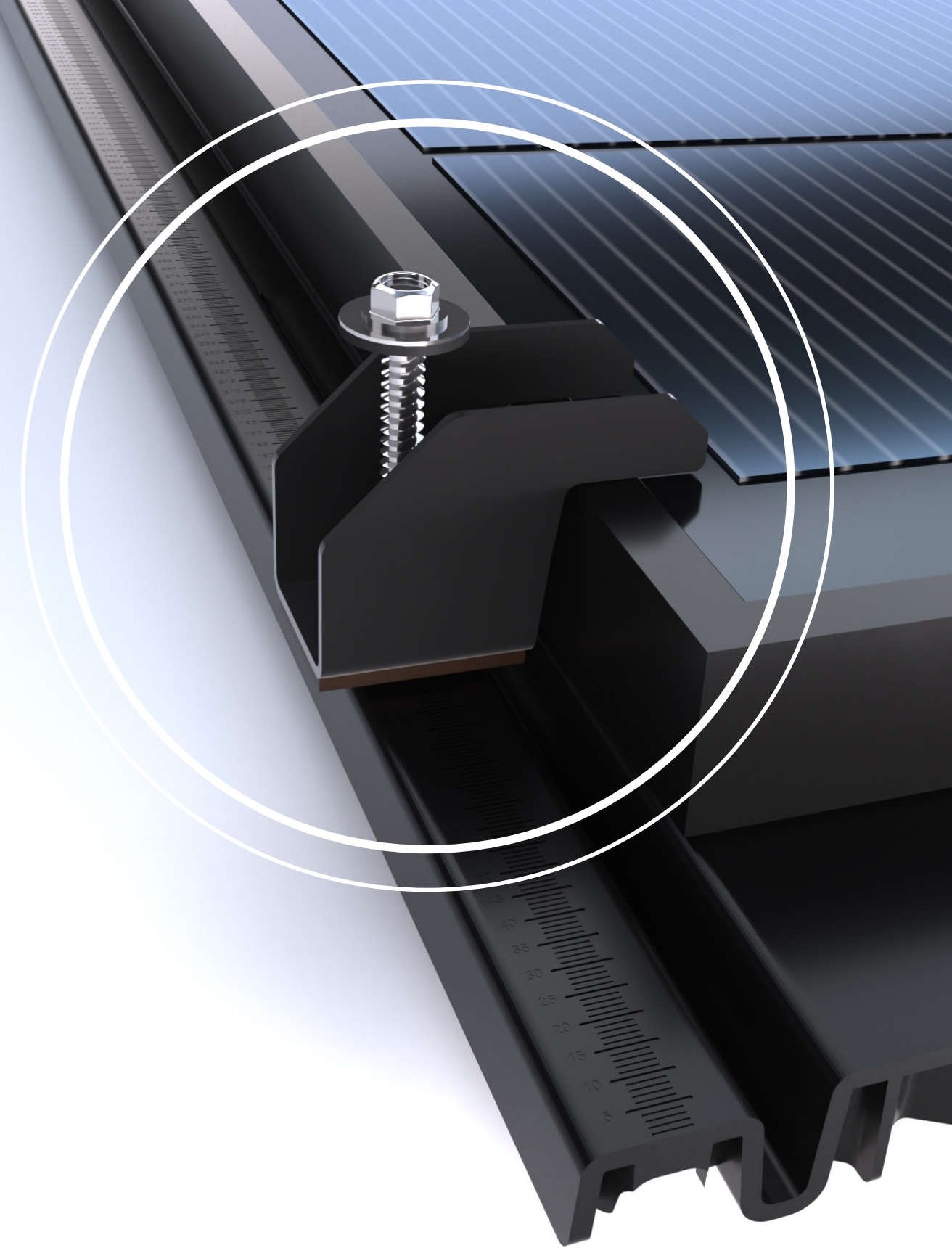
## Single Clamps Technology

### Engineered for Strength

S4's single clamps deliver exceptional mechanical performance with some of the highest pull-out values on the market.

**One universal clamp throughout installation means:**

- More reliable system
- Faster installation
- Compatible with all panel types
- Works with all roof configurations



## Compact EPDM Seals

Proven Durability.

Long-Lasting Tightness.

Zero maintenance

### TECHNICAL SPECIFICATION

- Hardness: 70 Shore A
- Temperature range: -40°C to +120°C
- Expected lifespan: Over 20 years
- UV, ozone, and weather resistant

Unlike cellular foam seals, our compact EPDM maintains optimal compression and shape for the entire system lifespan.



Single Clamp

Enhanced Resistance, Secure Fixation.



EPDM 70 Shore A

High Resilience, Long-Lasting Sealing

## Complete Roofing Compatibility

A versatile range of waterproofing products designed for real-world construction sites and installer preferences.

- **Flashing Tapes**

Available in aluminum, lead, or EPDM. Four colors: brown, terracotta red, dark brown, black. High-performance butyl adhesive.

- **Sealing Joints**

Pre-compressed joints engineered for leak protection in vulnerable areas and expansion zones.

- **Edge Flashings**

Designed for lateral finishes and complex roof junctions, ensuring visual consistency and watertightness.

- **Under-Roof Membranes**

Polypropylene or polyurethane options with various certifications including BBA for demanding regulations.

S4 SealBand



WATERPROOFING STRIP



EAVES EDGE FLASHING TAPE



PRECOMPRESSED SEAL ROLL 20x40MM



S4 RoofGuard

BBA - ROOF UNDERLAY SCREEN  
150 G/M<sup>2</sup>

## Quality Control & Material Testing

### RELIABILITY STARTS WITH MATERIALS.

S4 Mounting System uses certified technical polymers, recyclable and engineered for solar applications.

Each production batch undergoes strict ISO & ASTM tests to guarantee mechanical strength, stability, and outdoor resistance.

### TESTING PROCESS

- Pre-production: certified raw materials, COA validation
- In-process: monitoring of temperature, pressure, and cycles
- Post-production: 1 unit tested every 2,000 for compliance

### FULL TRACEABILITY

Every part is linked to its material batch with COA, test records, and printed batch codes.

### COMMITMENT

S4 Mounting System .Uncompromising quality, certified at every step.



## Innovation Makes Solar Simple

Beyond our flagship solution, S4 offers comprehensive universal mounting systems for all panel sizes, roof types, and installation formats.

### BaseFlow

- Ballasted Flat Roof System

Universal tray compatible with all PV panel sizes.

Features air recovery and storage options.

### SupraMount

- Universal Over-Roof System

One single hook for every roof type.

Streamlined installation across all applications.

### SunFlow

- Multifunction Ballasted Tank

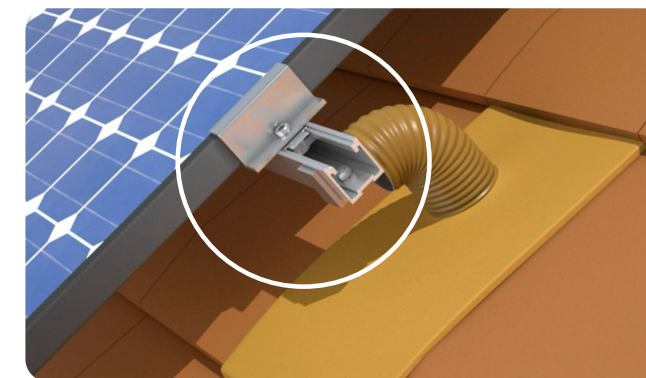
Water recovery up to 600L per panel.

Air recovery, storage, and agricultural applications

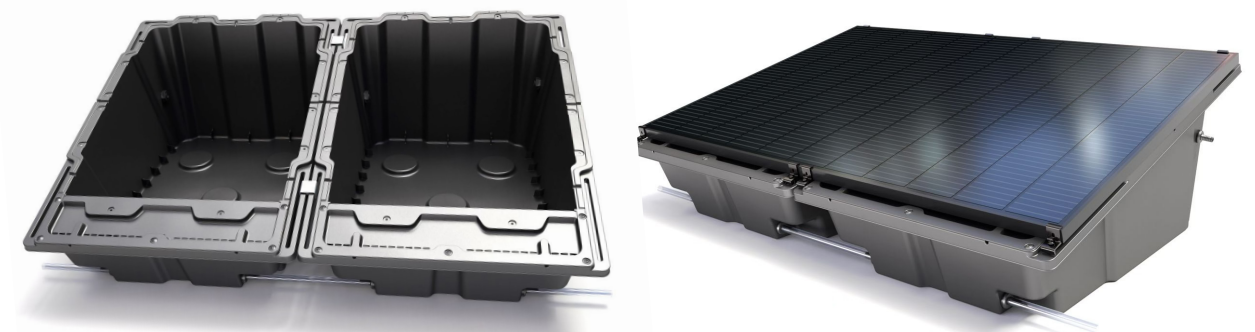
Features air recovery and storage options.



Ballasted photovoltaic tray for flat roof



The universal over-roof mounting system  
One single hook for every roof type



**Multifunction ballasted tank**  
Photovoltaic ballast  
Water recovery – Up to 600 L per panel  
Air recovery – Captures warm air under panels  
Storage tray – For tools or components

## Order With Ease

S4 Online Platform for Solar Professionals

### INSTANT ORDER PROCESSING

Fully connected to ERP, linked directly to factories and logistics hubs for real-time execution.

### SMART CONFIGURATION TOOL

Enter project parameters or upload plans (PDF, DWG, BIM) to receive optimal configuration and component lists.

### REAL-TIME TRACKING

Monitor order status, stock availability, and delivery time-lines with automatic notifications.

### COMPLETE RESOURCES

Access quotes, order history, technical certificates, manuals, datasheets, and conformity declarations in one place.



## S4 MOUNTING SYSTEM PLATFORM

With S4, you go from system design to installation through a secure, modern, and intuitive interface.

A true all-in-one solution for fast, reliable, and professional project management in the photovoltaic industry.

**Configurator**

## Generate Quote

**Panel width (mm)**

1134

**Panel height (mm)**

1700

**Total panels**

6

**Panel power (Wp)**

0

**Layout**

Columns

3

Rows

2

**3x2 = 6 ✓**

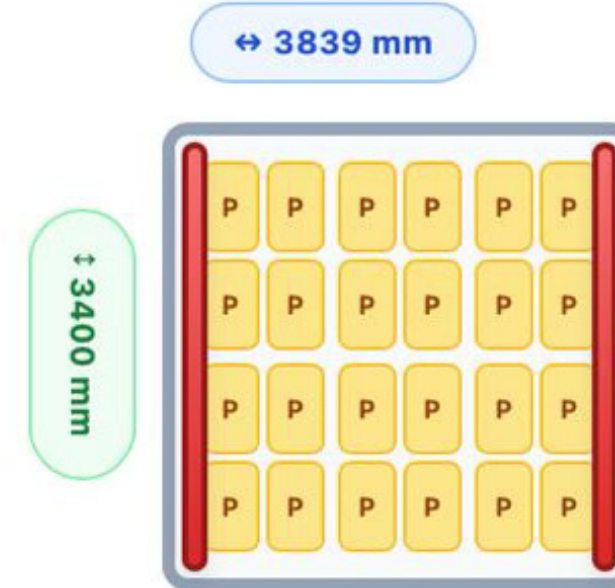
## Configuration visualization

3 columns x 2 rows = 6 panels

Solar panels view




Technical view (structure)



Legend:

 Side flashing

 Solar panel

 Plate P (610mm / 582mm)

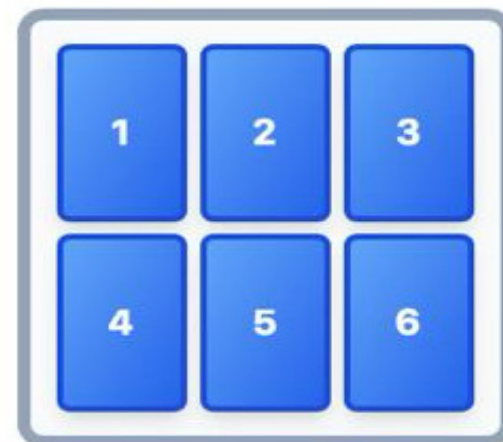
## Configuration visualization

3 columns x 2 rows = 6 panels

Solar panels view

← 3524mm →

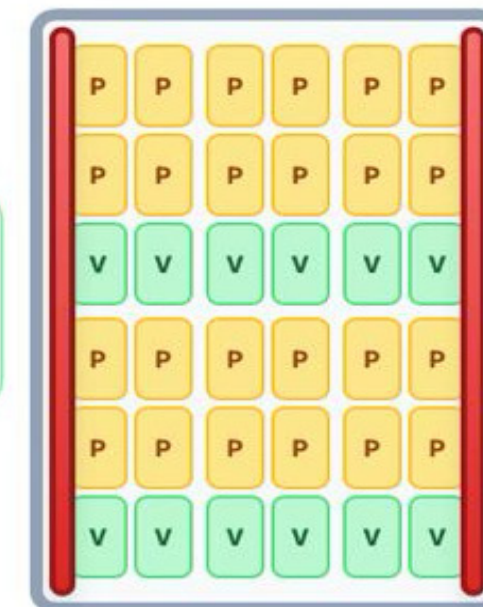
← 4400mm →



Technical view (structure)


↔ 3839 mm

↑ 4400 mm



Legend:

 Side flashing

 Plate P (610mm / 582mm)

 Solar panel

 Vertical extension

## Configuration visualization

3 columns x 2 rows = 6 panels

Solar panels view

← 5641mm →

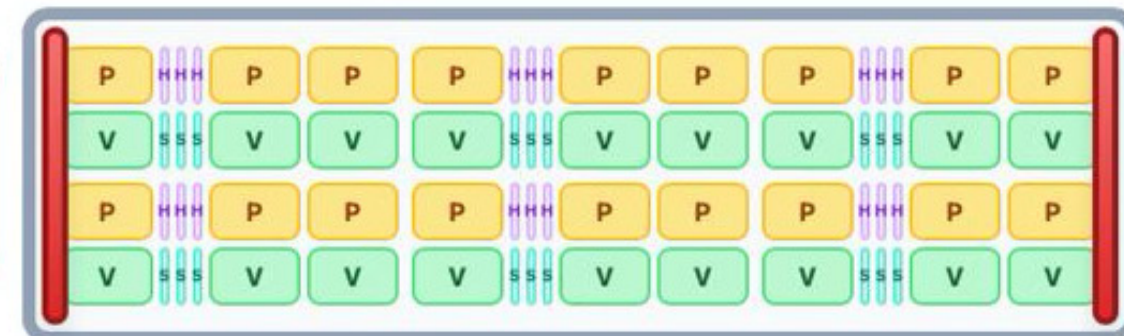
← 2295mm →



Technical view (structure)


↔ 5955 mm

↑ 2295 mm




Legend:


 Side flashing

 Plate P (610mm / 582mm)

 Vertical extension

 Solar panel

 Small H ext. (34mm)

 Small short S ext. (34mm)

### Project information

Project name

E.g.: Solar Installation Building A

Client

E.g.: ABC Company

Date

09/10/2025

### Detailed quote

Untitled project

Client: Not specified

Date: 2025-10-09

Configuration: 6 panels (3x2) - Landscape

Reference	Description	Qty	Unit price excl. VAT	Discounted price (35%)	Total excl. VAT
ART2600	Universal plate	18	11.80 £	7.67 £	212.49 £
ART2602	Small horizontal extension	18	2.62 £	1.70 £	47.18 £
ART2604	Vertical extension	18	5.54 £	3.60 £	99.68 £
ART2603	Large end wave	2	3.04 £	1.97 £	6.08 £
ART2606	Short small horiz. extension	18	1.34 £	0.87 £	24.06 £
ART2607	Short end wave	2	1.74 £	1.13 £	3.47 £
ART2630	Stirrup	24	1.43 £	0.93 £	34.37 £
ART2609	Pin	24	0.07 £	0.05 £	1.67 £
ART2640	Flashing hook	8	0.49 £	0.32 £	3.89 £
ART2641	Flashing	4	16.60 £	10.79 £	66.42 £
ART2660	Screw 6x60	12	0.27 £	0.17 £	3.23 £
ART2661	Screw 6x25	36	0.16 £	0.11 £	5.94 £
ART2662	Pre-stressed seal	2	11.46 £	7.45 £	22.92 £

Total Public excl. VAT

**531.39 £**

**Total Net excl. VAT**

**345.40 £**

# THE 10 KEY STRENGTHS

## 1. FULL HEIGHT UNIVERSALITY

Adapts to all panel heights from legacy models to future generations thanks to modular vertical extensions.

## 2. FULL WIDTH UNIVERSALITY

Universal horizontal extensions fit every panel width with no format limitation.

## 3. GUARANTEED COMPATIBILITY FOR DECADES

Future-proof design ensures long-term continuity even as panel standards evolve.

## 4. SIMPLIFIED PANEL REPLACEMENT

If panel sizes change, only the modules are replaced while the S4 RooFit base stays intact.

## 5. PORTRAIT OR LANDSCAPE ORIENTATION

Both orientations possible without extra parts or added cost, offering total on-site freedom.

## 6. INTEGRATED WATERPROOFING AND FINISHING

No need for top flashings as full waterproofing is built directly into the system.

## 7. ONLY FIVE COMPONENTS IN TOTAL

Ultra-simplified design reduces costs, errors, and logistics complexity.

## 8. MIXED ORIENTATIONS ON THE SAME ROOF

Combine portrait and landscape panels to optimize every surface.

## 9. NO BATTENS IN PORTRAIT MODE

Direct fixing streamlines preparation and accelerates installation.

## 10. REDUCED BATTENS IN LANDSCAPE MODE

Only one horizontal batten is needed between rows for secure and efficient fixing.



## **UNITED KINGDOM**

### **S4 MOUNTING SYSTEM UK LTD**

1-75 Shelton Street- Covent Garden

London - WC2H 9JQ - UK

Company Number: 16612111

## **FRANCE**

### **S4 MOUNTING SYSTEM FRANCE**

55 Avenue Marceau 75016 Paris

TEL : +33 9 55 17 82 59

Mail: [contact@S4mountingsystem.com](mailto:contact@S4mountingsystem.com)

RCS: 911 110 773 RCS Paris

**[S4mountingsystem.com](http://S4mountingsystem.com)**